

Guide for ordering the roof underlay OMEGA UDOs 330 and OMEGA UDOs 350

Valid from 1 September 2025

1. Ordering procedure

Three types of large-area welded prefabrication are distinguished:

Standard

Characteristics:

- **Rectangular shape (length × width)**
- **Mono-pitch roof or gable roof**
- **Without markings (roof windows, counter battens or other penetrations)**
- **Without cut-outs (roof windows, dormers)**

For standard orders, please complete the order form at the end of the document or send a drawing.

Special shape

If the requirements for a standard order are not fulfilled, the order will automatically be classified as a special shape. Examples of special roof geometries are illustrated below (Figure 1).



Figure 1: Special shape roof areas

3D prefabrication

For more complex roof geometries, e.g. with a welded dormer, lean-to roof, hips or valleys (Figure 2).



Figure 2: 3D prefabricated roof areas

2. Order requirements

An order must include the following information:

Order form (last page)

- **Type of prefabrication (standard, special shape or 3D prefabrication)**
- **Roof area in m²**
- **Area of drawn/marked roof sections (if applicable) in m²**
- **Length of 3D welding seams (if applicable) in m**

Drawing requirements (standard order: no drawing required)

- **DWG or DXF file format**
- **all roof underlay areas in one file**

The roof underlay drawing must show the actual area and the true verge lengths, i.e. drawn in 2D (in the CAD program on one level, $z = 0$).

Drawing content

- Direction of water run-off indicated with an arrow or labeled ridge, eaves and valleys
- at least one reference dimension with unit
- area size (m²)
- label the 3D prefabrication seam (if applicable)

Figure 3: Drawing with true surface areas

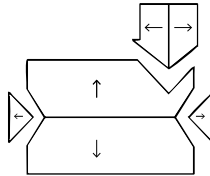
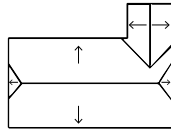


Figure 4: Roof plan drawing



3. Markings, penetrations, 3D prefabrications and eaves strips

Counter battens

Counter battens are marked with an “L”. The side edge indicates the outer edge of the counter batten and the perpendicular line indicates its width. If the counter batten is longer than 5 m, a rotated “T” is drawn in the middle. If, on a gable roof, the counter battens on both roof surfaces are aligned, the counter battens are marked with a continuous line at the ridge (Figure 3).



Figure 5: Counter batten marking over 5m including a ridge

Roof windows

Roof windows are drawn according to the customer's plan. Roof window openings are only cut out upon explicit customer request. The cut-out is made 5 cm smaller all around than shown in the drawing.

Further penetrations

Chimney pipes and ventilation pipes are never cut out and are always only marked.

3D prefabrication

3D prefabrications must be clearly labeled as such in both the order and the drawing. The affected welding seams must be indicated.

Eaves strips

Eaves strips are indicated by a second line at the eaves edge. In addition, these lines must be labeled as such in the drawing. For a standard order, a mention in the order is sufficient (without a drawing).

4. Delivery times / scheduling

Regular

Depending on the workload, the delivery time is two to three weeks from receipt of the order.

5. Cost calculation

The cost of prefabrication is calculated based on the roof area, the roll widths and any additional services. The price per square metre varies depending on the type of prefabrication. When calculating the square metres, openings in the roof surface are included (not deducted). The price for the counter batten markings is also determined via the square metre price. Roof windows or other openings can be marked or cut out on request and are charged per piece. Chimney or ventilation pipes are only marked and are priced per three units. Eaves strips are charged according to the length of the eaves.

6. Our services

Welding seam

The welding seams are oriented against the direction of water run-off (according to the customer's plan). Counter joints or seams parallel to the direction of water run-off are not permitted (except for 3D valley and hip seams).

The welding seams are visually inspected for continuity and the functional layer is checked for damage. The seams are 40 mm wide and are thermally welded.

3D Welding seam

The 3D welding seams (40 mm) are thermally welded.

Custom fabrication

A maximum tolerance of 50 mm is added to the dimensions specified by the customer.

Palletized

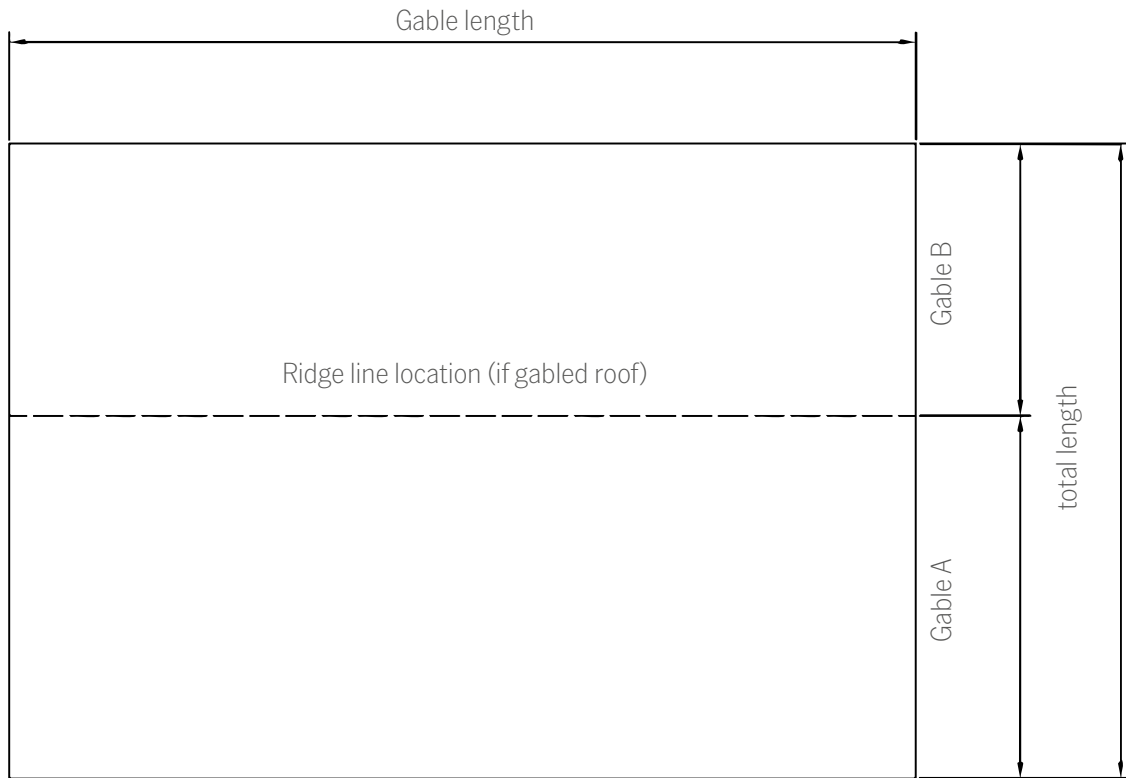
A cardboard sheet or a piece of roof underlay membrane is placed on the pallet to protect the prefabricated product. The rolled and folded prefabricated membrane is placed on this protective layer and then wrapped with transparent film.

Custom-marked prefabrication Roof underlay (OMEGA UDOs 330/350)

For each individual part, a reference sketch (numbering of the unrolling steps) is drawn directly onto the prefabricated membrane using a white marker. If several positions are included, the individual parts are labeled with position numbers or designations according to the customer's plan.

Order form – Standard prefabrication

Valid from 1 September 2025



Eave length		m
Gable length		m
Gable A		m
Gable B		m
Area		m ²
Number of		Pieces
With eaves strips	yes	no

If the order is not a standard order, we require the layout drawings in DWG or DXF file format.