

Technical data sheet

OMEGA MH 500 SK DUO Roof underlay

Is an extremely diffusive underlay with two two-way acrylate adhesive strips for installation directly on the thermal insulation or the wood sheathing. Highly penetration-resistant due to additional mesh reinforcement, even without sheathing. Tested by IFA according to test principles GS-Bau-18 (as at 2015): "Guidelines for testing and certification of fall-through resistance of components for construction and restoration". (DGV Test; IFA 1904101). Type: Standard = without adhesive tape, SK DUO = double sided adhesive tape.

Advantages

- rain-tight
- wind-tight
- uv-stabilized
- fully recyclable
- easy to cut
- anti-glare
- fall-through resistant
- anti-slip
- provides optimum safety during handling

Field of application

- for vented pitched roof
- high quality protection for wood and insulation
- for installation directly on thermal insulation or wood sheathing
- high mechanical resilience in both directions

Available dimensions

| Article number | Type | Roll width | Roll length | Rolls / Pallet | Total area |
|----------------|--------|------------|-------------|----------------|---------------------|
| 20MMH50 | SK DUO | 1.5 m | 50 m | 20 rolls | 1500 m ² |

Technical data

| | | | |
|---|-----------------------------|--|---|
| sd-value | 0.02 m | Material composition | 3-layer PP fleece with two two-way acrylate adhesive strips and tear-resistant fabric |
| Elongation (EN 12311-1) lengthwise | 10 - 20 % | Elongation (EN 12311-1) crosswise | 8 - 15 % |
| Tensile strength (EN 12311-1) lengthwise | 700 (-100 / +180) N / 50 mm | Tensile strength (EN 12311-1) crosswise | 600 (-50 / +110) N / 50 mm |
| Tear propagation resistance (EN 12310-1) lengthwise | 430 (-30 / +220) N | Tear propagation resistance (EN 12310-1) crosswise | 400 (-50 / +100) N |
| Temperature resistance | -40-80 °C | Weight | 230 (±10) g/m ² |
| Colour | Black | Resistance to water flow (EN 1928) | W1 |
| Storage | Cool and dry | Fire performance (EN 13501-1 / EN 11925-0) | E |

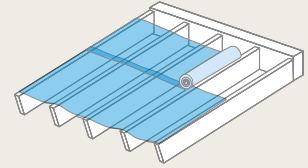
Recommended products

| | |
|---|---------------------------------|
|  | OMEGA FROZEN Adhesive Paste |
|  | PE NDB Nail Sealing Tape DSK |
|  | OMEGA QUILLI Sealing Compound |
|  | OMEGA NDB Nail Sealing Tape ESK |
|  | OMEGA NDB Nail Sealing Tape DSK |

OMEGA MH 500 SK DUO Roof underlay

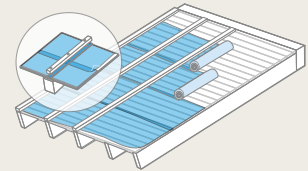
(1) Underlay (unsupported)

OMEGA Roof Underlay is nailed parallel to the eaves with a slight drape and laid and mechanically fixed above the rafters. Vertical overlaps/joins must always lie on a rafter. All overlaps must be bonded with OMEGA QUILLI Sealing Compound. Horizontal underlay panels can be joined using SK DUO adhesion as provided or with OMEGA QUILLI Sealing Compound.



(2) Underlay (supported)

The roofing membrane is laid on formwork parallel to the eaves as underlay. The sheets are nailed concealed at the ridge edges at a distance of 10 cm (marking edge). All overlaps/connections must be sealed with AIRSTOP ULTRA, AIRSTOP FLEX or the integrated adhesive strips (with sufficient contact pressure). The perforation protection requires sufficient pressure between the counter batten and the roofing membrane.

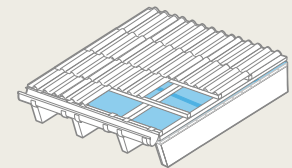


(3) Eaves construction

We recommend an eaves construction with drainage below the gutter so that snowmelt build-up can easily drain off. We recommend the use of a metal sheet to drain off water.

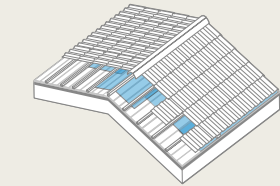
(4) Ridge area

The ridge area is closed directly when covered with OMEGA roof underlay. This provides immediate protection against water penetration. In non-insulated lofts and/or ventilated interior insulation the ridge formation must be made open: the blankets end 3 cm before the ridge apex, counter battens are mounted and a 50 cm wide strip of OMEGA roof underlay must be attached over the roof apex.



(5) Valley information

The first step in valley formation is to lay a continuous valley blanket.



(6) Penetrations

Sections cut out for roof penetrations (extractor pipes, roof windows, chimneys, etc.) should be kept as small as possible and the ends of the sheets must be fixed so that no rain or snow can penetrate. To achieve a perfect seal the suitable adhesive technology by ISOCELL GmbH & Co KG must be used. Make sure that the substrate is clean! The manufacturer can accept no liability for mechanical damage. The applicable regulations and guidelines (e.g. of the ZVDH (Central Association of German Roofers) for Germany, Austrian Standard, ÖNORM B 4119, for Austria, ...) must be observed! The impermeability of micro-porous webs can be impaired by wood preservatives, chainsaw oil or oily substances. Our application technicians will be glad to inform you! *The roof underlay does not replace roof covering. The roof must be covered during the period of the specified weathering time. Early covering has a positive effect on the resistance to ageing.*

