

Technical Data Sheet

# WOODYCELLFlex

FLEXIBLE WOOD FIBRE  
INSULATION

Flexible framework insulation in roof, wall  
and ceiling construction.  
Insulation for interior walls,  
facing formwork and service cavities.



## Technical Data Sheet

# WOODYCELLFlex

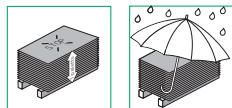
- Improved fibre structure, greater stability, less dust formation
- Excellent friction fitting; expands to fit adjoining components
- Easy to install and not irritant to the skin
- Excellent heat insulation in summer
- Water vapour permeable for protection of the construction
- Supports a perfect healthy living environment
- Ecological, environmentally friendly and recyclable



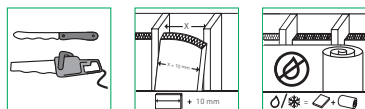
### TECHNICAL INFORMATION WOODYCELLFlex

Production and monitoring in compliance with	DIN EN 13171
Board marking	WF – EN 13171 – T3 – TR1 – AF5
Fire performance according to DIN EN 13501-1	E
Nominal value thermal conductivity $\lambda_D$ [W / (m * K)]	0.036
Nominal value thermal resistance $R_D$ [(m <sup>2</sup> * K) / W]	1.25 (45) / 1.90 (70) / 2.60 (95) / 3.30 (120) / 4.00 (145) / 5.40 (195) / 6.10 (220)
Actual value thermal conductivity $\lambda_B$ [W / (m * K)]	0.038
Density [kg / m <sup>3</sup> ]	~ 60
Water vapour diffusion resistance value $\mu$	1/2
Specific heat capacity c [J / (kg * K)]	2,100
Length related flow resistance [(kPa * s) / m <sup>2</sup> ]	≥ 5
Waste code (according to AVV)	030105 / 170201, disposal as wood and wood-based materials
Raw materials	Wood fibre, polyolefin fibre, ammonium sulphate

#### STORAGE



#### INSTALLATION



### PACKAGING WOODYCELLFlex

Thickness [mm]	Dimensions [mm]	Weight /m <sup>2</sup> [kg]	Pcs. / pack	Packs / pallet	Coverage / pallet [m <sup>2</sup> ]	Weight / pallet [kg]
45	1.220 * 565	2,70	10	100	68,93	186,11
70	1.220 * 565	4,20	8	64	44,12	185,28
95	1.220 * 565	5,70	5	50	34,47	179,22
120	1.220 * 565	7,20	4	40	27,57	198,52
145	1.220 * 565	8,70	4	32	22,06	180,87
195	1.220 * 565	11,70	3	24	16,54	193,56
220	1.220 * 565	13,20	2	20	13,79	181,98