

# OMEGA Alu- Butyl Foldable Conduit Sleeve FRGD

A fast and permanent sealant for penetrations in bitumen vapour retarders, roofing membrane, soft fibre-board, OSB, under-roof sheathing, concrete floors etc.

The high-stretch EPDM sleeve has a butyl adhesive collar, provides extremely strong adhesion and is tear-resistant. At the same time it gives the required strain relief. The alu coating makes the sleeve water-repellent and UV-resistant.

## FIELD OF APPLICATION

- Openings for conduits
- Openings in Roof sloping

## ADVANTAGES

- extremely flexible, for roofs with greater slope
- resistant to UV
- integrated butyl- sealing plaster
- rubber heat-resistant up to 160°C (short-term)

## AVAILABLE IN THE FOLLOWING DIMENSIONS

Item FRGD	FRGD 100	FRGD 150
For conduit entry with diameter	100 - 125 mm	150 - 165 mm
Outer dimension	350 mm	350 mm
Carton contents / Pieces	4	4

## PRODUCT DATA

Composition	EPDM rubber with pure butyl adhesive collar, alu coated
Temperature resistance of adhesive	- 40 °C - + 100 °C
Working temperature	+ 5 °C - + 40 °C
Storage	cool and dry
Colour	black, adhesive collar alu

10/2017\_EN

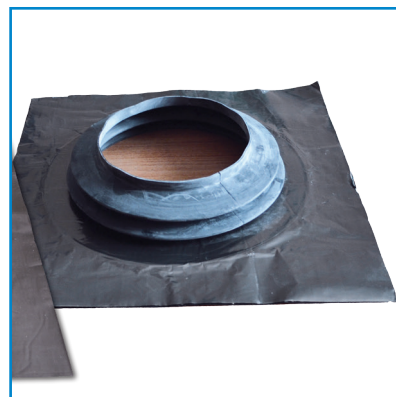
# ISOCELL

# PROCESSING GUIDELINES

## OMEGA Alu- Butyl Foldable Conduit Sleeve FRGD

Pull the rubber sleeve over the conduit and attach to the air-tight layer (vapour barrier, OSB,...) by the adhesive collar. The diameter of the sleeve selected must have the appropriate dimension for the conduit entry point! The materials used must be free from dust and grease and substrates must be dry and supporting.

On porous material like wood or concrete, ... the use of BUBI LF Bonding Primer is recommended. The greater the pressure applied, the better the performance of the sealing plaster.



ISOCELL GmbH  
Gewerbestraße 9  
5202 NEUMARKT AM WALLERSEE | Österreich  
Tel.: +43 6216 4108 | Fax: +43 6216 7979  
office@isocell.at

ISOCELL SCHWEIZ AG  
Herbergstrasse 29  
9524 ZUZWIL | Suisse /Schweiz  
Tel.: +41 71 544 47 20  
office@isocell.ch

ISOCELL FRANCE  
170 Rue Jean Monnet | ZAC de Prat Pip Sud  
29490 GUIPAVAS | France  
Tel.: +33 2 98 42 11 00 | Fax: +33 2 98 42 11 99  
contact@isocell-france.fr

ISOCELL BUREEL BELGIË  
Außenborner Weg 1 | Schoppen  
4770 AMEL | Belgique  
Tel.: +32 80 39 90 58 | Fax: +32 80 39 97 68  
office@isocell.be

ISOCELL Sverige AB  
Gamla Stallet | Stora Wäsby  
194 37 UPPLANDS VÄSBY | Sverige  
Tel.: +46 10 130 25 01  
office@isocell.se

**ISOCELL**  
[www.isocell.com](http://www.isocell.com)